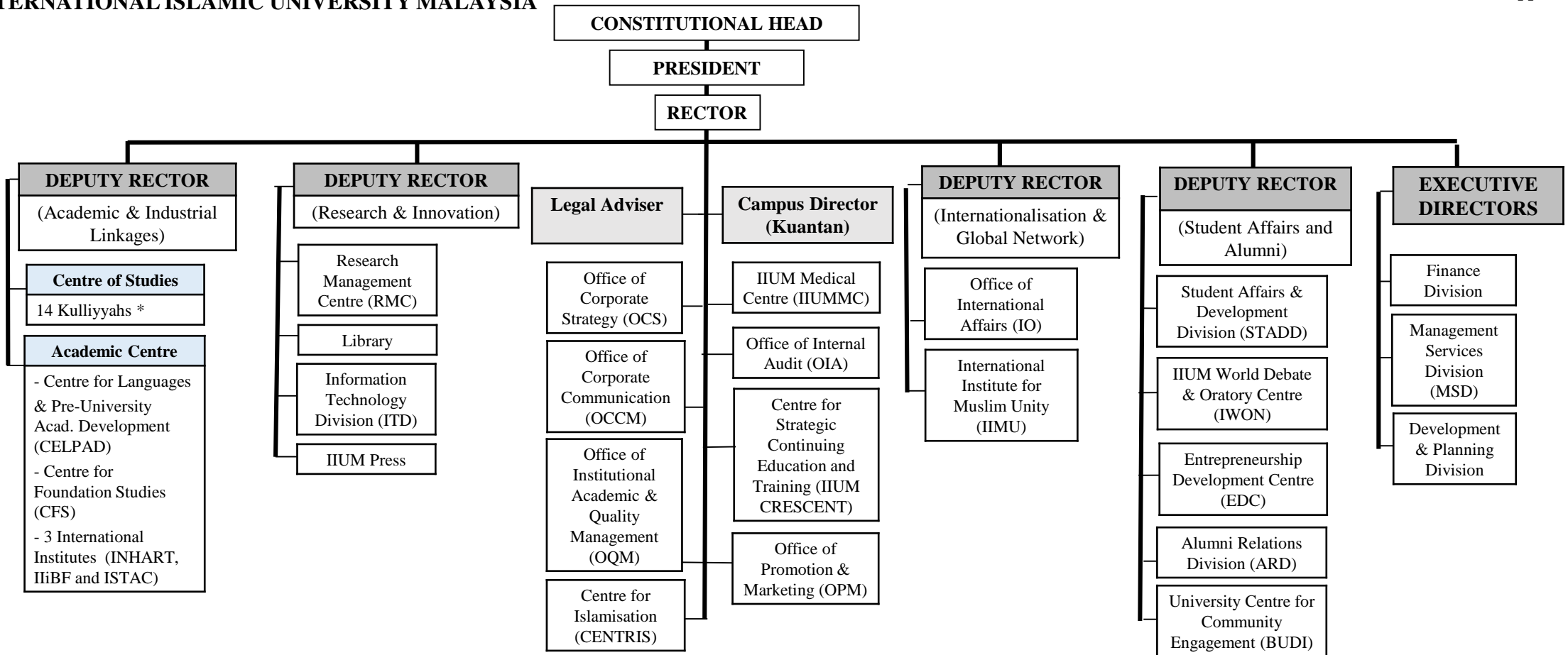


# ORGANISATIONAL STRUCTURE

## INTERNATIONAL ISLAMIC UNIVERSITY MALAYSIA



**LEGEND:**

- Kulliyahs : AIKOL, KENMS, KIRKHS, KOE, KOED, KAED, KICT, KLM, KOM, KOP, KOS, KAHS, KOD and KON
- Offices under ISTAC: CITRA
- Supporting Offices under ODR(AIL) : AMAD, CPS, CTL and OIL
- Centres of Excellence under RMC : Few COEs
- Offices under MSD : HWC, OSEM and SHAS Mosques
- Offices under Finance Division : RSD and IEF
- Offices under Development & Planning : Development Division and OSHBE
- Offices under STADD : CLAV, CCSC and SDC