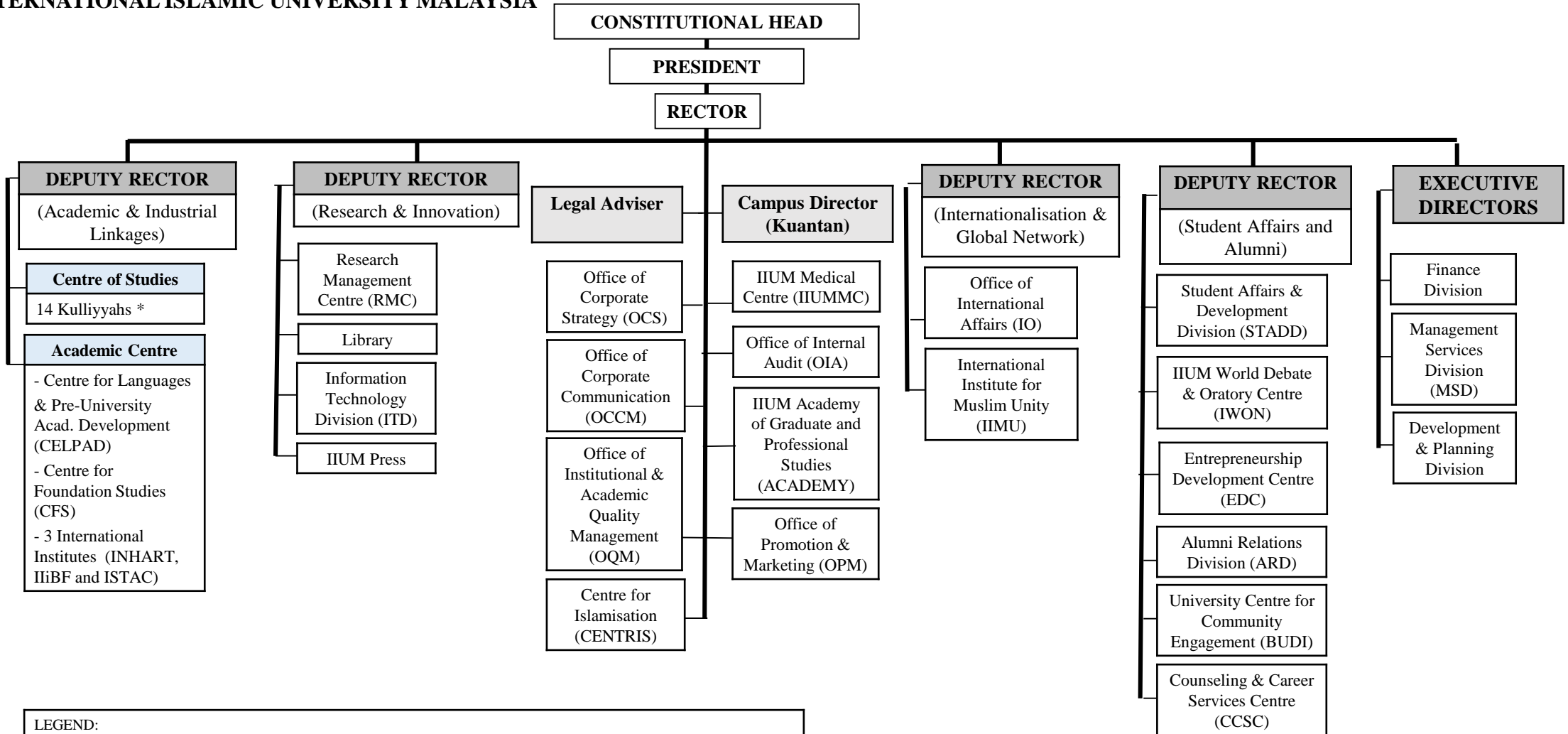


# ORGANISATIONAL STRUCTURE

## INTERNATIONAL ISLAMIC UNIVERSITY MALAYSIA



**LEGEND:**

- Kulliyahs : AIKOL, KENMS, KIRKHS, KOE, KOED, KAED, KICT, KLM, KOM, KOP, KOS, KAHS, KOD and KON
- Office under ISTAC: CiTRA
- Supporting Offices under ODR(AIL) : AMAD, CPS, CTL and OIL
- Research entities under RMC : ICWR, ICGP, IEC, NRTC, AHAS, iMoLeC, BERC, ICEEM, ASR, SBKT, PPDSRU, IP, BPMERU, ICS, ICNOR, NCD and TERM
- Offices under MSD : HWC, OSEM and SHAS Mosques
- Offices under Finance Division : RSD and IEF
- Offices under Development & Planning : Development Division and OSHBE
- Offices under STADD : SDC, DSU, NCCA and CCA