

IIUM OFFICIAL GUIDELINES ON RETURNING STUDENTS (INTERNATIONAL STUDENTS) TO IIUM CAMPUSES FOR SEMESTER 2 2020/21. NO. 1/2021

SECTION	ITEM	PAGE
1	INTRODUCTION	2
2	GUIDELINES FOR INTERNATIONAL STUDENTS RETURNING TO CAMPUS	3
3	FREQUENTLY ASKED QUESTIONS	5
4	STUDENT ACTIVITIES ON CAMPUS	8
5	CONCLUSION	9
6	STANDARD OPERATING PROCEDURES (SOP) FOR THE ENTRY OF NEW INTERNATIONAL STUDENTS INTO MALAYSIA	11
7	ENTRY PROCEDURE FOR INTERNATIONAL STUDENTS BACK TO CAMPUS	18

SECTION 1: INTRODUCTION

1. IIUM is committed in ensuring the safety of the staff and students. Therefore, the University takes all instructions by the Government seriously.
2. In addition to formal teaching and learning, on-campus experience contributes tremendously to students' holistic education. Being on-campus provides students with access to University facilities such as libraries, computer labs and studios.
3. Hence, IIUM welcomes the announcement issued by Ministry of Higher Education (MOHE) dated 9th February 2021 to allow students return to campus starting 1st March 2021.
4. As per the announcement by MOHE, the following IIUM students will be allowed to return and to follow classes for Semester 2, 2020/2021 on-campus:
 - a. Students who require practical, laboratory, clinical, studio, workshop and the use of special equipment for learning;
 - b. Students without access to devices, Internet or conducive learning environment to follow remote teaching and learning from home;
 - c. On-campus students at foundation centre;
 - d. All foreign students, **except those from the United Kingdom**;
 - e. Students with special needs; and
 - f. Students undertaking MUET, international and professional examinations.
5. All classes for Semester 2, 2020/2021 will commence on **1st March 2021, for Gombak, Kuala Lumpur and Kuantan campuses** and **28th February 2021 for Pagoh campus**.
6. Classes for Semester 2, 2020/2021 will be conducted via **HYBRID MODE**.

SECTION 2: GUIDELINES FOR INTERNATIONAL STUDENTS RETURNING TO CAMPUS

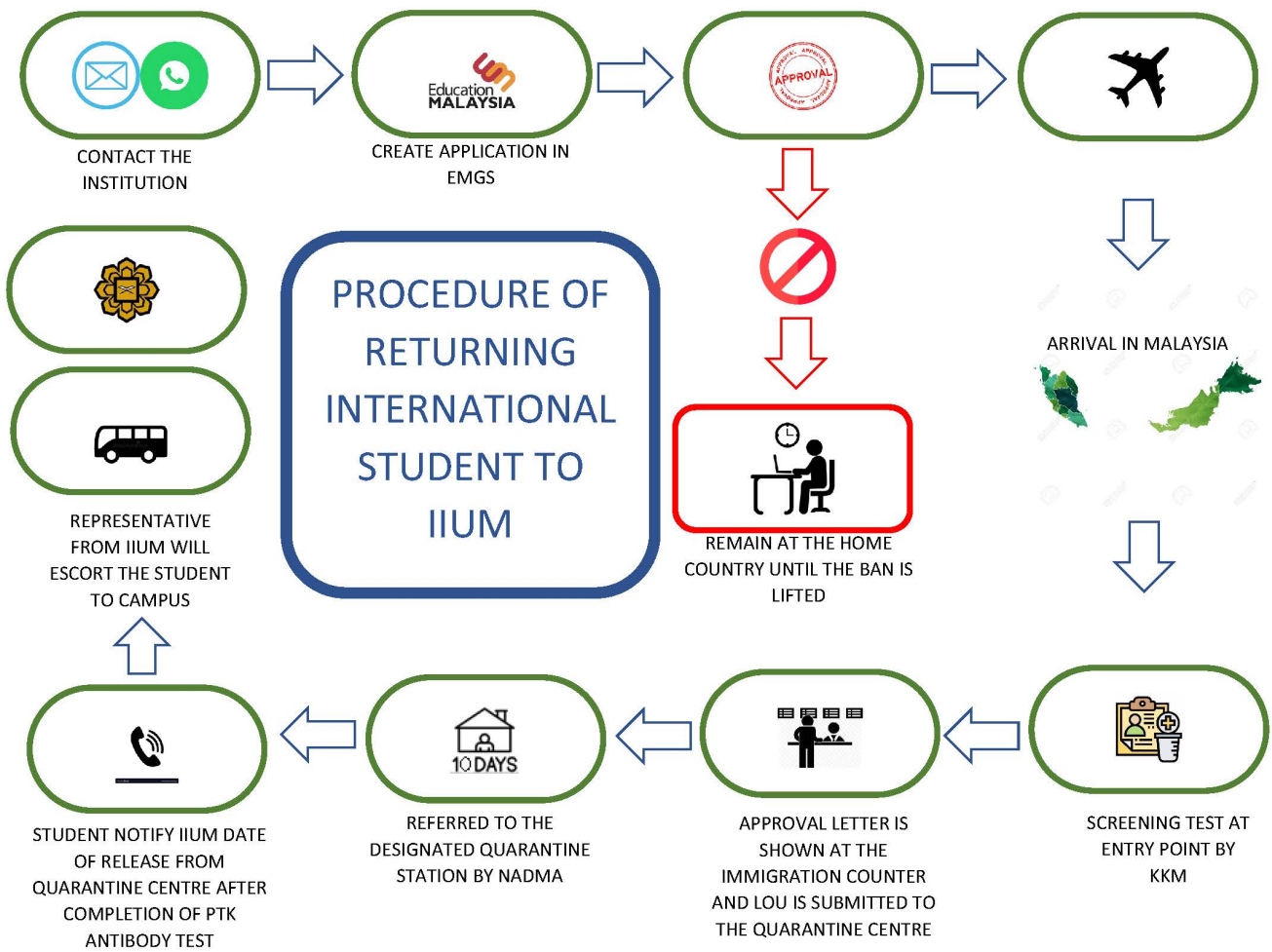
1. All international students who decided to return to campus for Semester 2, 2020/2021 must:
 - a. Submit an application for admission through the Education Malaysia Global Services (EMGS) system at the link: www.educationmalaysia.gov.my;
 - b. Receive an entry approval letter that has been approved by the Director General of Immigration (DGI);
 - c. Download, complete and sign the Letter of Undertaking and Indemnity (LOU) and get a Notice of Travel from an accredited Malaysian Representative;
 - d. Undergo the RT-PCR COVID-19 detection test three (3) days before leaving for Malaysia;
 - e. Download the MySejahtera app on smartphones and complete all required information three (3) days in advance before arrival;
 - f. Students pay in full for the COVID-19 quarantine and test charges through the online system MySafeTravel / MyQr application by MyEG at the link www.myeg.gov.my and submit the payment slip at the International Admission Entrance.
 - g. The quarantine and test charges as per table below.

CHARGES FOR COVID-19 DETECTION TEST AT INTERNATIONAL ENTRANCE AND MOH FACILITIES	
COVID-19 CONFIRMATION TEST	FEE
RT-PCR	RM 250.00
RTK Ag	RM 120.00
QUARANTINE COSTS	
ACCOMODATION/OPERATION COSTS	FEE
Cost of accommodation. (RM150.00 per day)	RM 1,500.00 (10 days of quarantine) RM 1,050.00 (7 days of quarantine)
Quarantine Station Operation	RM 2600.00

**please refer to Section 6 and 7.*

2. What information is needed before submitting an application for admission?
 Students are required to submit the following information:
- Full name;
 - Citizenship;
 - Passport Number;
 - Higher Education Institution;
 - Details of Study;
 - Phone number;
 - Email;
 - Student's Present Location (current country);
 - Flight Dates and Information;
 - Consent form to bear the cost of treatment and other related costs if found positive of COVID-19; and
 - Other relevant information required from time to time.

As of 7th January 2021



SECTION 3: FREQUENTLY ASKED QUESTIONS

- 1. Are students allowed to apply for admission to Malaysia directly to the Malaysian Immigration Department (MID)?**
NO. All applications for admission to Malaysia must be obtained from HEIs through EMGS.
- 2. Are students allowed to enter Malaysia without signing a Letter of Undertaking (LOU)?**
NO. Only students who signed the LOU and received the Notice of Travel are allowed to enter.
- 3. Are students' dependents allowed to enter Malaysia if the Dependent Pass is still valid?**
Only students are allowed. All Dependent Pass holders are still not allowed to enter Malaysia.
- 4. Do international students need to get a confirmation letter from the Embassy if they wish to leave Malaysia?**
NO. Students only need to get a letter of permission for cross-district / state travel from the nearest Police Station. IIUM will assist students in this matter.
- 5. Do students need to undergo the COVID-19 Screening Test in their country of origin before entering Malaysia?**
It is compulsory for students to take the COVID-19 Screening Test three (3) days before the departure date to Malaysia and the test report should be shown to the officers on duty at the PMA upon arrival.
- 6. Does the COVID-19 Screening Test Report need to be translated to English?**
YES. Only the COVID-19 Screening Test Report that is translated into English is accepted for the purpose of inspection by the authorities upon arrival in Malaysia.
- 7. Are COVID-19 Screening Test Results exceeding three (3) days before the departure date received at the International Entrance?**
NO. COVID-19 Screening Test results exceeding **three (3) days** before the departure date **are invalid**. Students must undergo the COVID-19 Screening Test again at PMA and undergo compulsory quarantine for **ten (10) days** at the designated quarantine station.

8. When will the COVID-19 Screening Test be implemented?

Students must undergo the RT-PCR COVID-19 Screening Test three (3) days before arriving in Malaysia and undergo a health screening once again at the Screening Counter, Ministry of Health Malaysia (MOH) at PMA upon arrival at the Airport. Students are only allowed to enter the Malaysian Immigration Department Inspection Counter upon completion of the COVID-19 Screening Test and if they do not show symptoms.

9. Is the cost implication of the COVID-19 Screening Test borne by government?

NO. All cost implications of the COVID-19 Screening Test during the admission process to Malaysia and until the quarantine ends are borne by the student.

10. Do students returning from abroad need to undergo mandatory quarantine before returning to campus?

YES. All students from abroad are required to undergo mandatory quarantine at the designated Quarantine Station, i.e., seven (7) days for international students who present the RT-PCR COVID-19 test report while at PMA and ten (10) days for those who do not present the RT-PCR COVID-19 report.

11. Are students allowed to choose a Quarantine Station?

NO. Quarantine stations will be determined by National Disaster Management Agency (NADMA).

12. What are the responsibilities of students during the quarantine period?

Students need to ensure the following:

i. Students undergo a second (2nd) swab test:

(a) Students who have shown evidence of the RT-PCR COVID-19 test report at PMA upon arrival in Malaysia undergo an RT-PCR / RTK Ag COVID-19 swab test on the 5th day of the quarantine period; and

(b) Students who do not show proof of RT-PCR COVID-19 test report at PMA upon arrival in Malaysia undergo a RT-PCR / RTK Ag COVID-19 swab test on the 8th day of the quarantine period; and

ii. Students need to carry out a daily self-assessment through the Home Assessment Tool in **MySejahtera** application for **14 days** from the arrival date.

13. What are the responsibilities of IIUM during the student's quarantine period?

IIUM needs to ensure the following:

- i. To identify the location of each student's Quarantine Station through EMGS; and
- ii. To make careful planning to ensure that the matter of taking students from Quarantine Stations back to the campus to goes smoothly and in an orderly manner.

14. Is the cost of quarantine borne by the government?

NO. All financial implications are borne by the student.

15. When should the COVID-19 Screening Test payment and Quarantine Costs be settled?

The COVID-19 Screening Test Fees and Quarantine Costs need to be settled online before entering Malaysia, and the payment slip should be submitted to the Officer at PMA. However, payment in cash at PMA is still allowed until further notice.

16. Are students allowed to proceed to IIUM campuses on their own after the quarantine period?

NO. Students are not allowed to proceed to IIUM campuses after the quarantine period without the supervision and monitoring from the university.

17. Do international students who have completed the quarantine period need to get a letter of permission from the police to cross Regions / Borders?

NO. National Disaster Management Agency (NADMA) will provide a confirmation letter for quarantine release (Release Order) to students which can be shown to Roadblock officers when crossing the District / State to proceed to IIUM campuses.

18. What action should be taken after international students have completed the mandatory quarantine set by NADMA?

IIUM needs to admit students who have completed the mandatory quarantine period for them to continue their studies on campus. A confirmation letter for quarantine release (Release Order) can be used to travel across Regions and States.

19. Do international students need to undergo isolation in IIUM campuses?

NO. International students only need to undergo compulsory quarantine at the Quarantine Station designated by National Disaster Management Agency (NADMA). Students need to undergo self-quarantine until the 14th day before being allowed to attend class.

SECTION 4: STUDENT ACTIVITIES ON CAMPUS

20. Activities allowed on campus will be as per IIUM Standard Action Procedure (SAP) depending on the COVID-19 Alert Level at the time.
21. All Deans are given the flexibility to decide how teaching and learning will be conducted at their respective Kulliyahs, either face-to-face, hybrid, or online.
22. However, all face-to-face teaching and learning must strictly follow the IIUM SAP, especially in terms of physical distancing and wearing of face mask.
23. Kulliyahs are to ensure that students who are unable to return to campus, can follow teaching and learning remotely (either synchronous or asynchronous).

SECTION 5: CONCLUSION

1. Staff and students must:
 - i. practice physical distancing of 1 metre apart at all times;
 - ii. avoid the **3C** (**C**rowded, **C**onfined and **C**losed conversation);
 - iii. practice the **3W** (**W**ash hands, **W**ear mask and **W**arn self and others on best COVID-19 practices);
 - iv. observe appropriate coughing and sneezing etiquette.
2. Staff and students must immediately and directly report and/or go to IHWC (General Line: 03- 6421 4444) if you have had:
 - i. any COVID-19 symptoms; and/or
 - ii. close contact with someone tested positive for COVID-19 and/or a Person Under Surveillance (PUS).
3. **All shall be subject to action under the Prevention and Control of Infectious Disease Act 1988 (Act 342) for failure to declare, or false declaration of your health condition and/or contact tracing situation; or intentionally refuse to provide any relevant information as required by the University authority.**
4. For any inquiries, please contact:
 - a. Assoc. Prof. Dr. Zulkifli Hasan
Deputy Rector (Student Development and Community Engagement)
(zulkiflih@iium.edu.my)
 - b. Prof. Dr. Ida Madieha Abdul Ghani Azmi
Dean, Centre for Postgraduate Studies (CPS)
(imadieha@iium.edu.my)
 - c. Prof. Dr. Amir Akramin Shafie
Director, Office of International Affairs (IO)
(aashafie@iium.edu.my)
 - d. Assoc. Prof. Dr. Gairuzazmi Mat Ghani
Director, Academic Management and Admission Division (AMAD)
(gairuzazm@iium.edu.my)
 - e. Dr. Mohd Azrul Azlen Abdul Hamid
Dean, KLM, Pagoh Campus.
(azrul_qld@iium.edu.my)

- f. Br. Mohd Khairulzain Abdul Rahman
Director (Administration). Office of the Campus Director, IIUM Kuantan

(khairulz@iium.edu.my)
- g. Madam Hasleena Mohamad Arsad
Director, Administration KL Campus

(hasleena@iium.edu.my)
- h. Madam Hafsah Mohd Yusoff
Director, Student Affairs and Development Division (STADD)

(hafсах@iium.edu.my)
- i. Madam Siti Thuraiya Abdul Rahman
Director, Residential and Services Department (RSD)

(sthuraiya@iium.edu.my)
- j. Dr. Siti Masitah Jamaludin
Chief Medical Officer, IIUM Health and Wellness Centre (IHWC)

(masitahjamaludin@iium.edu.my)
- k. Dr. Ahmad Zahirani Ahmad Azhar
Chief Mahallah Principal

(zahirani@iium.edu.my)
- l. Dr. Harmi Taazim Mohamad
Director, Office for Communication, Advocacy and Promotion (OCAP)

(harmi_taazim@iium.edu.my)
- m. Br. Amir Nadzim Kaharudin
President, IIUM Student Union

(amir.nadzim@live.iium.edu.my)

These guidelines are to be followed until further notice.

May Allah S.W.T. protect all of us.

IIUM SEJAHTERA COUNCIL

12th FEBRUARY 2021 (as of 11am)

Standard Operating Procedures (SOP) for the Entry of **NEW** International Students into Malaysia

- All international students (except from United Kingdom) are allowed to enter Malaysia to continue their studies.
- However, Dependant Pass are yet to be allowed to enter Malaysia.

QUARANTINE PERIOD

Students are required to comply with the **mandatory quarantine** for **7 or 10 days** upon arrival. This is subject to furnishing your RT-PCR COVID-19 test result at the international arrival gate.

- 10 days quarantine period - For those who fail to provide the test result or if the test result is invalid/unacceptable by Malaysia's Ministry of Health (MOH).
- 7 days quarantine period - For those with valid test result and acceptable by Malaysia's Ministry of Health (MOH).

QUARANTINE COST	
ACCOMMODATION/OPERATIONAL COST	FEE (RM)
Accommodation Cost (RM150.00/day)	1,500 (10 days of quarantine)
	1,050 (7 days of quarantine)
Fixed Charges (Quarantine Station Operations)	2,600

TOTAL FOR QUARANTINE COST FOR 10 DAYS:
 RM1,500 + RM2,600 = **RM4,100**

TOTAL FOR QUARANTINE COST FOR 7 DAYS:
 RM1,050 + RM2,600 = **RM3,650**



All fees imposed by the Government of Malaysia including the COVID-19 detection test, quarantine cost, and hospital admittance fee (if required) must be borne by the international student.

UPDATE ON eVAL

Kindly note that the Immigration Department of Malaysia has agreed to allow the extension of e-Visa Approval Letter (eVAL) that has expired since March 2020 due to the implementation of Movement Control Order (MCO).



As part of the eVAL application process, the following must be fulfilled:-



Your Higher Education Institution (HEI) will submit your 'Declaration of Accommodation.'



Your HEI will also submit your 'Declaration for Commencement of Online Classes' (applicable only for eVAL application that has been submitted prior to 1st January 2021).



Students must ensure the validity of your passport must be at least 18 months prior to arrival.

PRE-ARRIVAL

PROCESS FOR NEW INTERNATIONAL STUDENTS

1 eVAL & Travel Authorization

Once the Immigration Department of Malaysia has approved the eVAL, the eVAL and the Travel Authorization will be auto-generated and made available for download through EMGS Website.

Please download the Travel Authorization from:

<https://visa.educationmalaysia.gov.my/emgs/application/searchForm/>



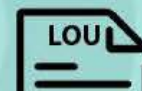
2 LOU and Indemnity & Travel Notice

Download, fill up and sign the Letter of Undertaking and Indemnity (LOU) and obtain the travel notice from the nearest Malaysian Mission office in your home country.

Please download the LOU from:

<https://visa.educationmalaysia.gov.my/guidelines/travel-athorisation-form-base.html>

(Please refer to Question 6 - Point 1).



3 Single-Entry Visa (SEV)

Students from countries that requires Single-Entry Visa (SEV) to enter Malaysia are required to submit their SEV application to the nearest Malaysian Mission office in their country.



4

RT-PCR COVID-19 Test

Students are required to undergo the RT-PCR COVID-19 Test **3 days before departure to Malaysia.**

The RT-PCR COVID-19 test result must be translated into **ENGLISH** to smoothen the process by the Malaysian authorities.



5

Quarantine & COVID-19 Screening Test Payment

Students will need to make the online payment for the quarantine and the COVID-19 Screening Test through **MySafeTravel** (www.safetravel.myeg.com.my)/**MyQr application by MyEG** (www.myeg.gov.my) and keep the payment slip as a proof at the international entry point upon arrival.



6

Download MySejahtera App

Students are required to download the **MySejahtera** app from the iOS App Store, Google Play Store or Huawei AppGallery to complete all the required information **3 days** prior to the arrival date.



POST-ARRIVAL

PROCESS FOR **NEW** INTERNATIONAL STUDENTS

Entry Points To Malaysia

International students will only be allowed to enter Malaysia via KLIA and KLIA 2 entry points. Any attempts to enter Malaysia from other entry points will be denied entry and may risk being deported to their country of origin.

1

COVID-19 Screening Test Charges

Should your RT-PCR & RTK Antigen Test at home country is not acceptable, you are required to do the test at Malaysian entry point. Following charges applied:

CHARGES FOR COVID-19 SCREENING TEST AT INTERNATIONAL ENTRY GATE & MOH FACILITY

COVID-19 SCREENING TEST	FEE (RM)
RT-PCR	250
RTK ANTIGEN	120

All fees imposed by the Government of Malaysia including the COVID-19 detection test, quarantine cost, and hospital admittance fee (if required) must be borne by the international student.

2

COVID-19 Test During Quarantine

During the Quarantine Period, students will be subjected to undergo:

- RT-PCR/RTK Ag COVID-19 swab test on the **5th** day of the quarantine period (For those that are subjected to a quarantine period of 7 days)
- RT-PCR/RTK Ag COVID-19 swab test on the **8th** day of the quarantine period (For those that are subjected to a quarantine period of 10 days)

3

Release Order

Once the quarantine period is completed, students will be issued with a Release Order by the National Disaster Management Agency (NADMA). This Release Order can be used by the students to travel to your respective campus/accommodation.

4

Return To Institution

After your quarantine period is over, students are advised to return to their institution/accommodation immediately. Education institutions will be required to pick up the students from their respective quarantine station.

5

On Campus

All international students are required to remain on campus during the period of Movement Control Order (MCO). Students will be able to continue their courses via hybrid learning.



ENTRY PROCEDURE FOR INTERNATIONAL STUDENTS BACK TO CAMPUS

Updated until: 14 January 2021



<http://jpt.mohe.gov.my>



Jabatan Pendidikan Tinggi



[jabatanpendidikantinggi](https://www.instagram.com/jabatanpendidikantinggi)



[@jpt_kpt](https://twitter.com/jpt_kpt)



Jabatan Pendidikan Tinggi TV

SOP ENFORCEMENT

THE SOP SHOULD BE READ IN ACCORDANCE TO THE ORDERS, RULES AND GUIDELINES SET BY THE GOVERNMENT FROM TIME TO TIME



KEMENTERIAN PENGAJIAN TINGGI



****The SOP is applicable to HEIs operating in Peninsula Malaysia only. For HEIs operating in the states of Sabah and Sarawak are subjected to the procedures set by the State Government and JIM State of Sabah and Sarawak.**

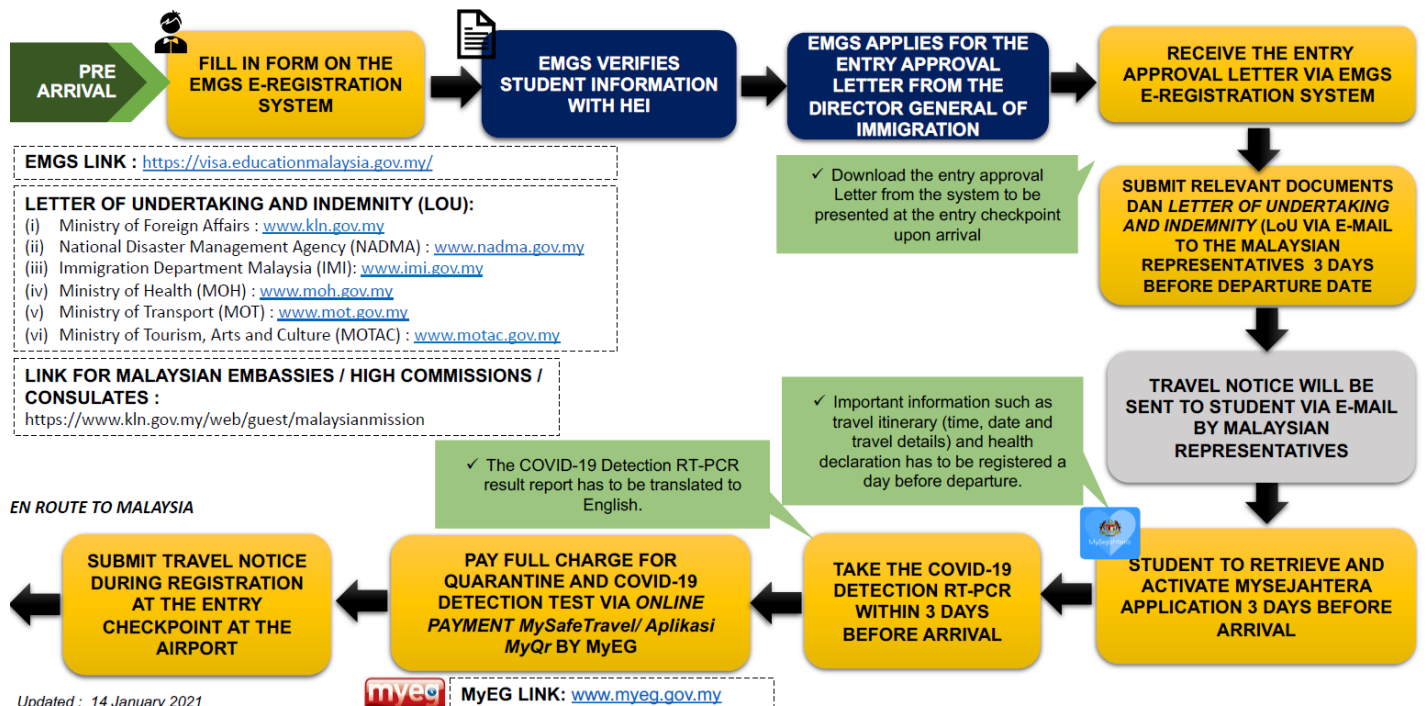
ANNOUNCEMENT



KEMENTERIAN PENGAJIAN TINGGI

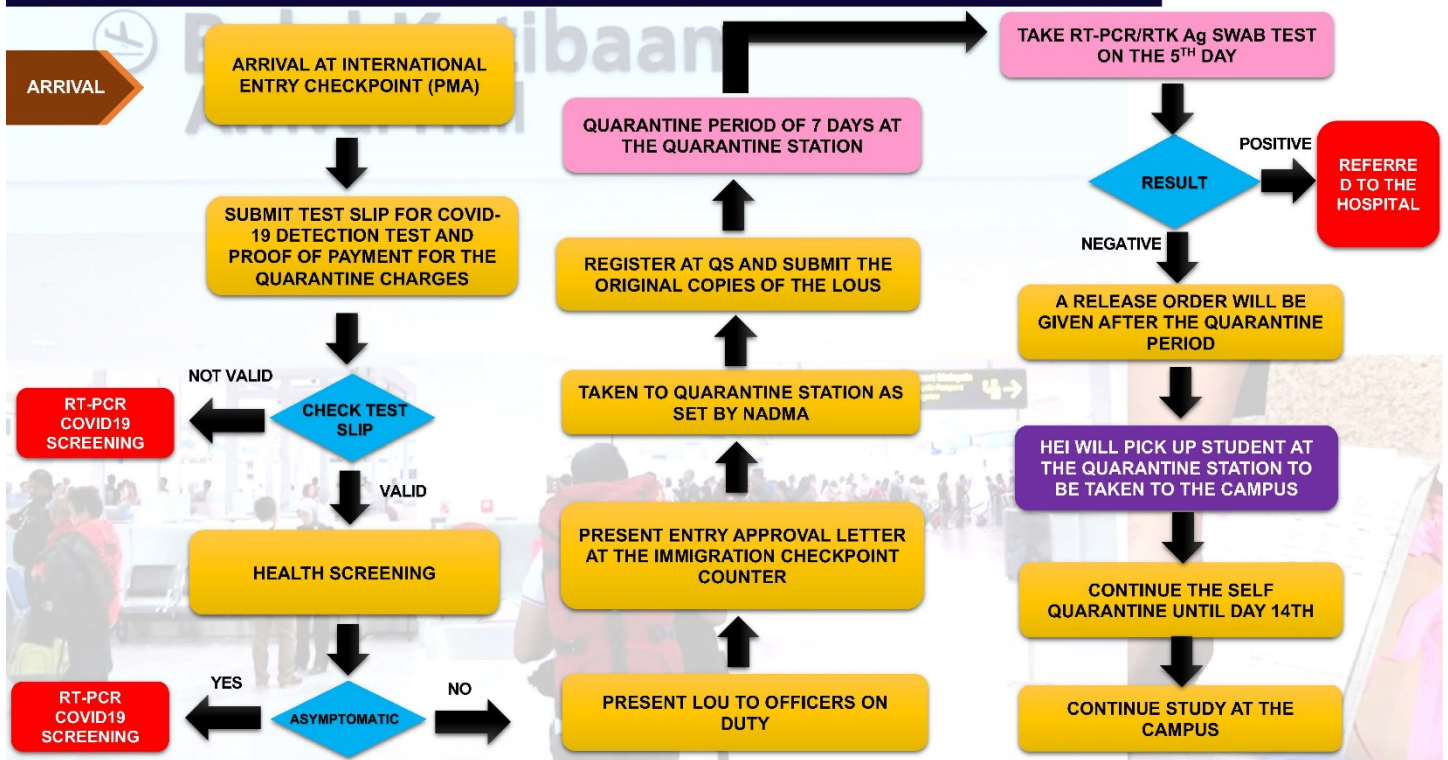
- 01** TO TAKE RT-PCR COVID-19 DETECTION TEST THREE (3) DAYS BEFORE LEAVING FOR MALAYSIA
- 02** ALL NON-MALYSIAN CITIZENS (BWN) ARRIVING IN MALAYSIA **WILL BE CHARGED WITH THE FULL NON-SUBSIDIZED FEES**
- 03** FULL PAYMENT FOR THE QUARANTINE AND COVID-19 DETECTION TEST CAN BE DONE ONLINE VIA **MySafeTravel / MyQr Application by MyEG**

INTERNATIONAL STUDENTS ENTRY PROCESS FLOWCHART

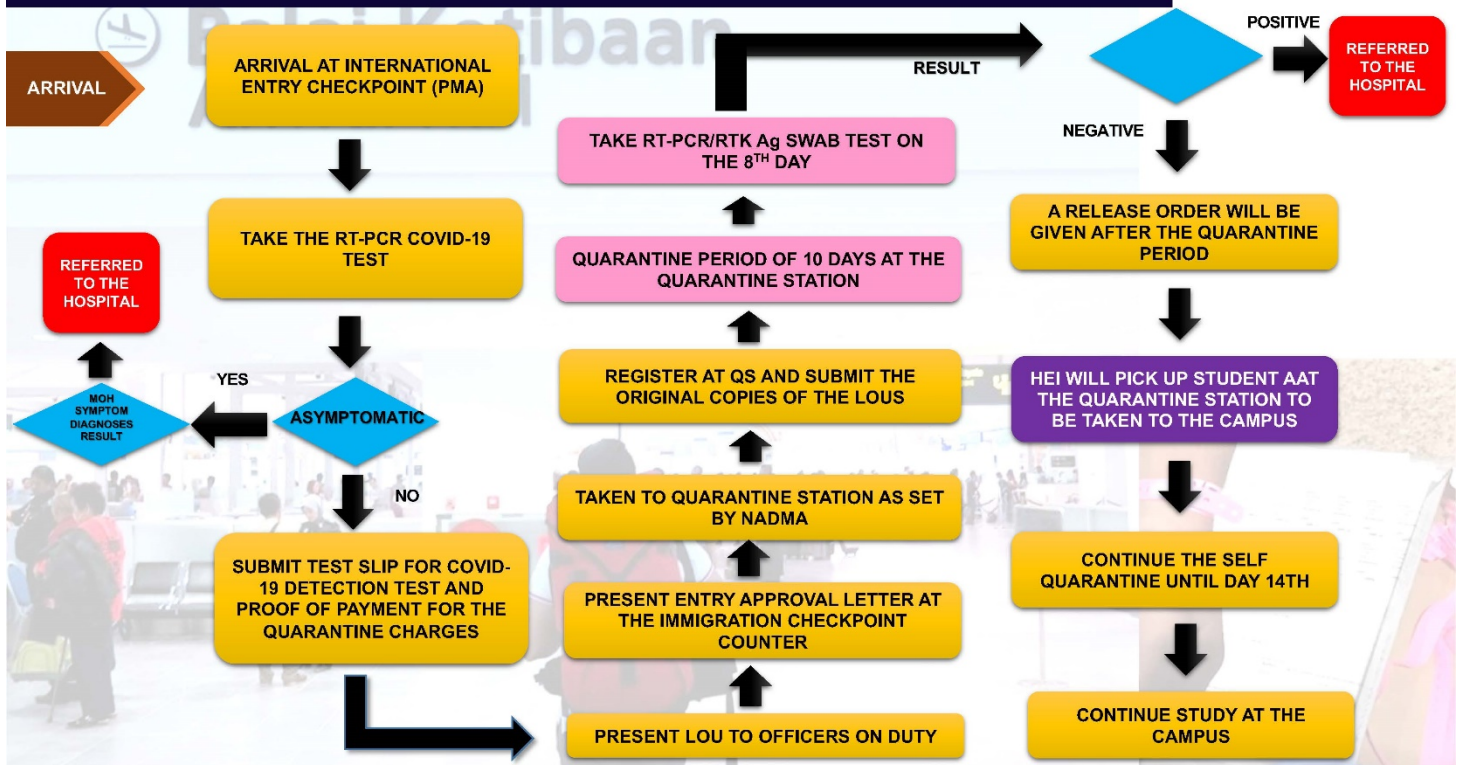


Updated : 14 Januari 2021

STUDENTS ENTERING MALAYSIA WITH THE RT-PCR REPORT



STUDENTS ENTERING MALAYSIA **WITHOUT** THE RT-PCR REPORT



FIXED CHARGES



WITH RT-PCR TEST RESULT

ITEM	FEE
FIXED OPERATIONS CHARGES	RM 2,600.00
ACCOMMODATION (RM 150.00/PER NIGHT)	RM 1,050.00
RT-PCR TEST	RM 250.00
RTK-Ag TEST	RM 120.00
TOTAL : RM 4,020	

* Student need to undergo quarantine at the Quarantine Station for **7 days**

WITHOUT RT-PCR TEST RESULT

ITEM	FEE
FIXED OPERATIONS CHARGES	RM 2,600.00
ACCOMMODATION (RM 150.00/PER NIGHT)	RM 1,500.00
RT-PCR TEST	RM 250.00
RTK-Ag TEST	RM 120.00
TOTAL : RM 4,470.00	

* Student need to undergo quarantine at the Quarantine Station for **10 days**

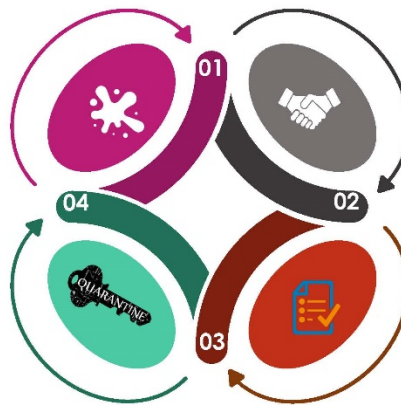
WHAT IS THE HEI RESPONSIBLE FOR



MINISTERIAN PENGAJIAN TINGGI

01
Identify student's personal and travel information and plan a safe and smooth entry into Malaysia and to the campus

04
Arrange logistics to pick up student after the mandatory quarantine at the quarantine station to the campus



02
Verify student's information before EMGS forwards the application to IMI for approval

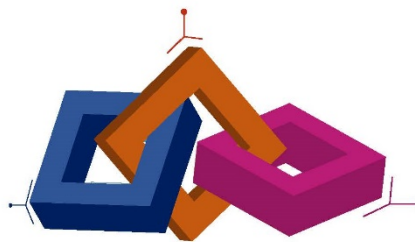
03
Inform student of the latest back-to-campus SOP in accordance to the orders, rules and guidelines set and updated by the Government from time to time and ensure student's adherence to the SOP

WHAT IS THE STUDENT'S RESPONSIBILITY

Pre Arrival

- 01** Download, complete and sign the *Letter of Undertaking and Indemnity (LoU)*
- 02** Obtain a Travel Notice from an accredited Malaysian Mission and an Entry Approval letter from the Director-General of Immigration (DGI)
- 03** Present the Travel Notice to airline companies, public transportations companies and the Immigration Department Malaysia (IMI)
- 04** Download, activate and register personal details on the MySejahtera application.

- 05** Pay full charge for the quarantine and the COVID-19 screening test via online system which is the MYSAFETRAVEL/ application MYQR by MYEG
- 06** Take a RT-PCR COVID-19 screening test three (3) days before arriving to Malaysia.



Upon Arrival

- 01** Present the LOU to officers on-duty
- 02** Do health screening and take a COVID-19 detection test

Post Arrival

- 01** Register at the Quarantine Station
- 02** Be fully responsible for own belongings and luggage
- 03** Do own health assessment daily during quarantine period