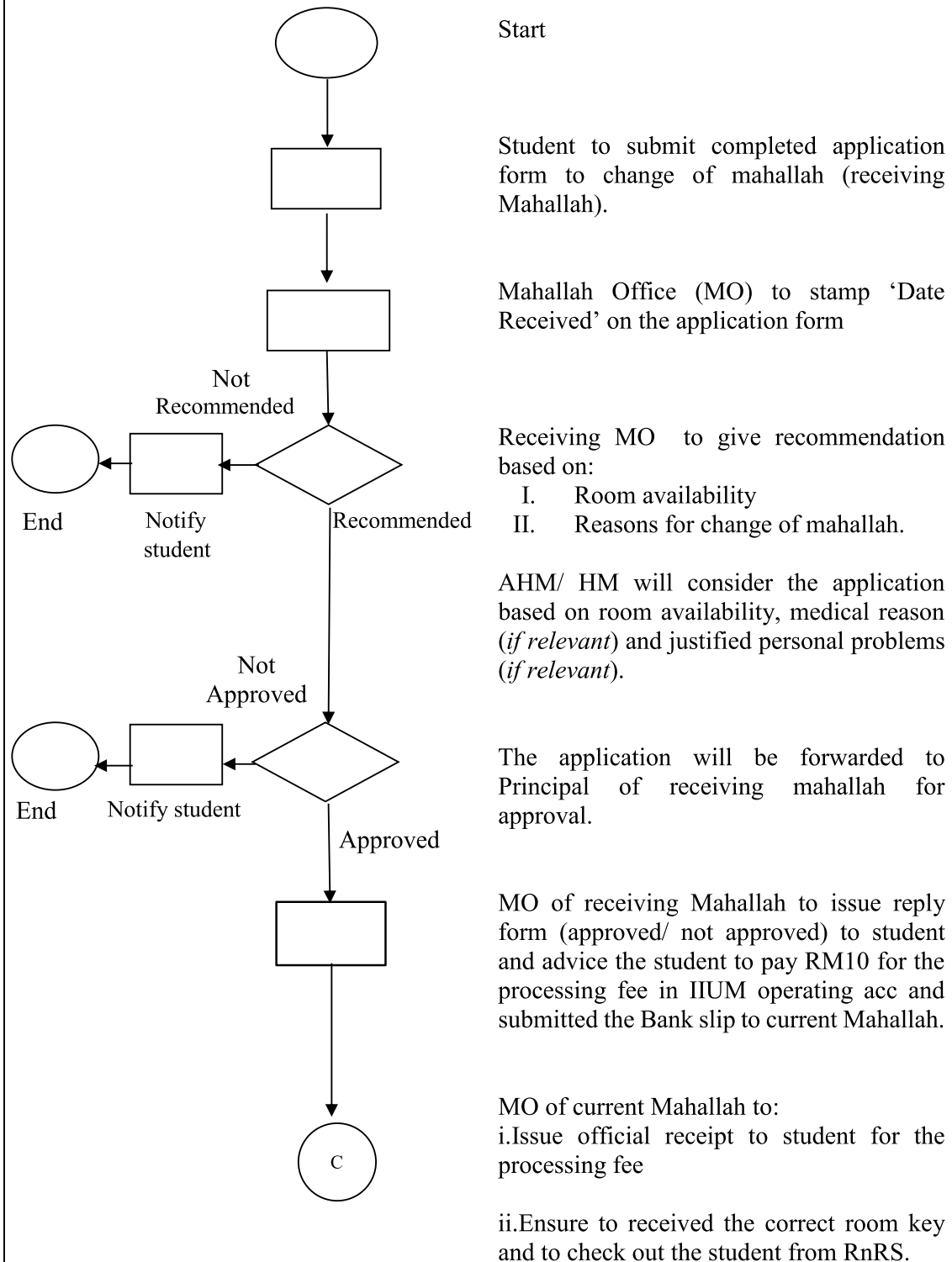
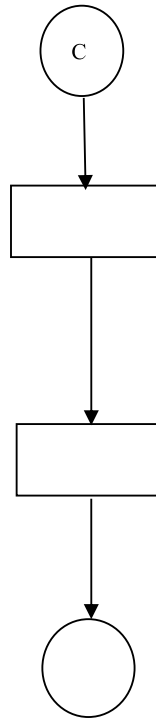


**FLOW CHART**  
**APPLICATION FOR CHANGE OF MAHALLAH**



**FLOW CHART**  
**APPLICATION FOR CHANGE OF MAHALLAH**



Continue

- i. MO of receiving Mahallah to handover the new room key and update in RnRs.
- ii. Ensure the student to fill in details in the manual Registration List.

- i. MO of current Mahallah to send student personal file/ document (if any) to receiving mahallah.
- ii. MO of receiving Mahallah to file the related document in the Master File.

End